

VILLAGE VIBE

HOLLOWAY ROAD

Heybridge

CHP are delighted to bring to the market an exciting new development of high specification properties now available in Heybridge.

Four two-bedroom houses
£290,000 min share 35% £101,500

Two three-bedroom houses
£360,000 min share 35% £126,000

Two two-bedroom maisonettes
(one ground floor, one first floor)
£235,000 min share 35% £82,250

Heybridge is a charming village set along the river Blackwater. Full of maritime charm these newly presented homes offer home owners desirable living with great travel links and plenty of activities for the family to get involved in.

This idyllic village located in the Maldon district of Essex offers picturesque walks, independent cafes and tearooms, estuary views scenic trails and much more.

With Blackwater retail park recently opened in Maldon an array of popular shops are just a short drive away. Maldon also offers great leisure facilities with the Blackwater Leisure Centre which boasts its own flumes as well as offering holiday programmes in its leisure centre which is a great opportunity for 5-12 year olds to get active.

Maldon's promenade park is a great day out for all the family and includes its own splash park and crazy golf.

Heybridge has its own primary school and Plume Academy in Maldon is the local secondary school with other schools located in near towns such as Witham.

Just a mile from Maldon town home owners here can also benefit from just a short 10 minute drive to the nearest train station for rail travel to London and is only a 5 minute drive to the A12.

PROPERTY SPECIFICATION:

- Integrated washing machine (washer/dryer in maisonettes);
- Integrated fridge/freezer;
- Integrated dishwasher;
- Neutral décor;
- Carpet throughout all non-wet rooms;
- Floor tiling to wet rooms;
- Allocated parking;
- NHBC 12 years warranty.

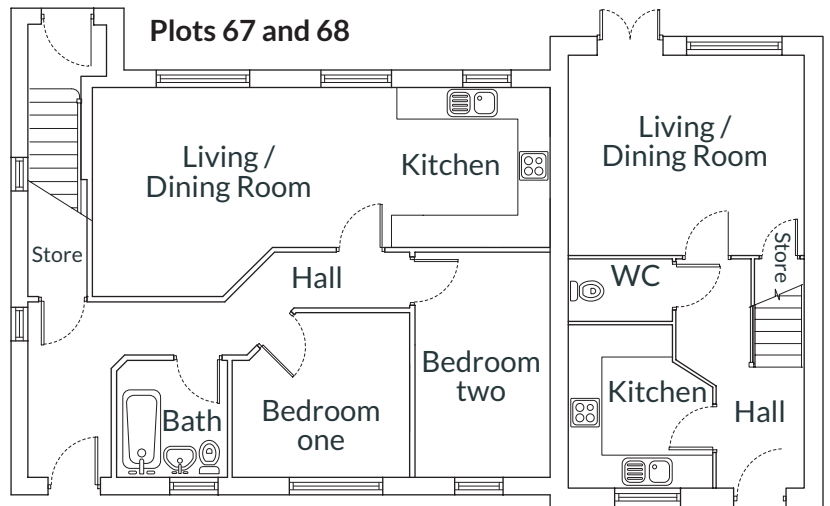
PROPERTY LOCATION: CM9 4DR



TWO-BEDROOM HOUSE

Plots 69, 72, 77 and 78 – 71m²

- Living / dining room
- Kitchen
- Bedroom one
- Bedroom two

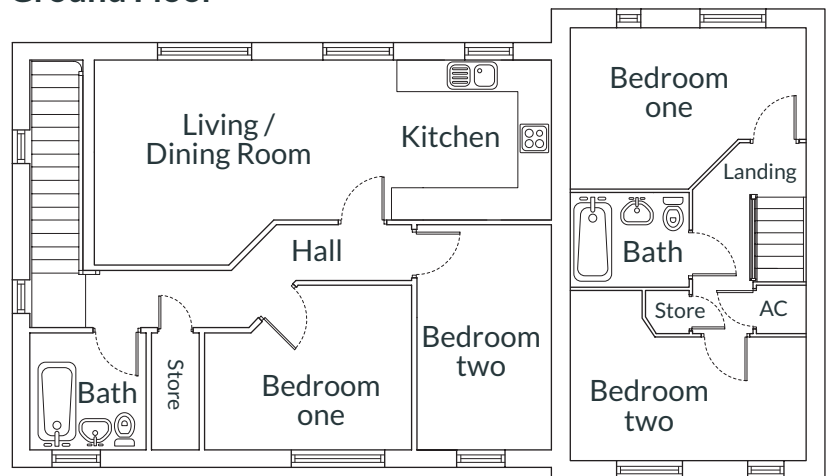


Ground Floor

TWO-BEDROOM MAISONNETTE

Plots 67 and 68 – 70m²

- Living / dining room
- Kitchen area
- Bedroom one
- Bedroom two



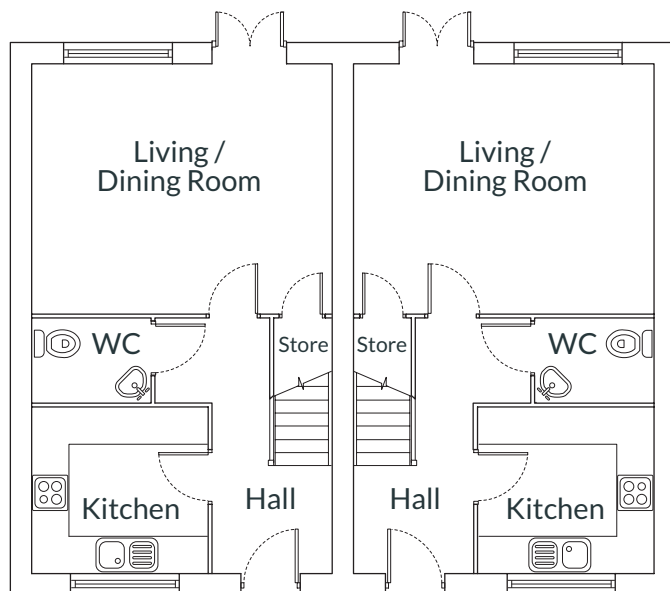
First Floor

THREE-BEDROOM HOUSE

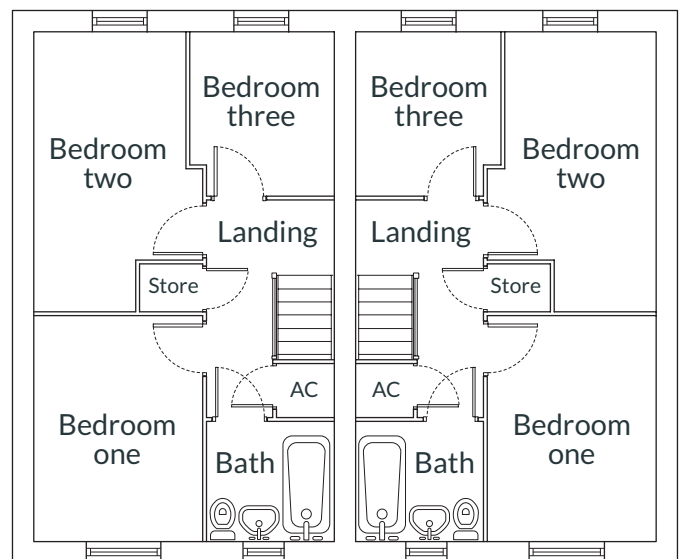
Plots 70 and 71 – 83m²

- Living / dining room
- Kitchen
- Bedroom one
- Bedroom two
- Bedroom three

Plots 70 and 71



Ground Floor



First Floor

We wish to inform prospective purchasers that we have prepared these particulars as a general guide. We have not carried out a detailed survey nor tested the services, appliances and fittings. Room sizes should not be relied upon for carpets and furnishings.