

VILLAGE VIBE

MONKS ROAD

Earls Colne

Five two-bedroom houses

Three two-bedroom semi-detached houses
£290,000 min share price 35% £101,500

Two two-bedroom detached houses
£310,000 - min share 35% £108,500

Set in the enchanting village of Earls Colne these beautifully designed spacious properties enable home owners to enjoy the benefits of country life with scenic views and green open space.

There is plenty to explore in the local high street. From independent shops and local boutiques, to butchers, florists, pubs and restaurants.

In the nearby towns of Braintree and Colchester you will find a wide range of facilities available. Such as sports and leisure facilities and large retail units.

Earls Colne is the oldest town in Essex and is perfectly placed near a number of towns such as Chelmsford, Colchester and Braintree.

An excellent location for families Earls Colne has its own Primary School which was given a 'Good' rating at its most recent Ofsted report. There are also a number of other schools nearby and Gosfield secondary school only a short drive away.

Earls Colne is just a short drive away from both Kelvedon and Marks Tey which both offer direct services to London Liverpool Street with journey times approx. 55 mins.

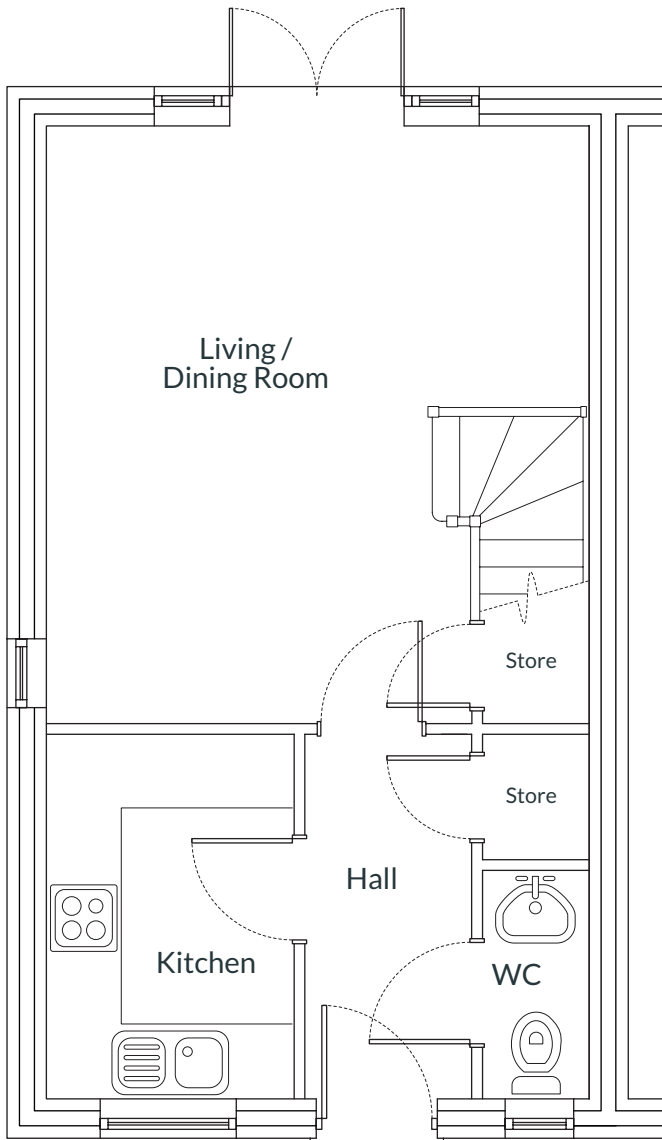
Both the A120 and M11 are within easy reach, connecting to nearby towns and cities including Braintree, Chelmsford, Colchester and Central London.

PROPERTY SPECIFICATION:

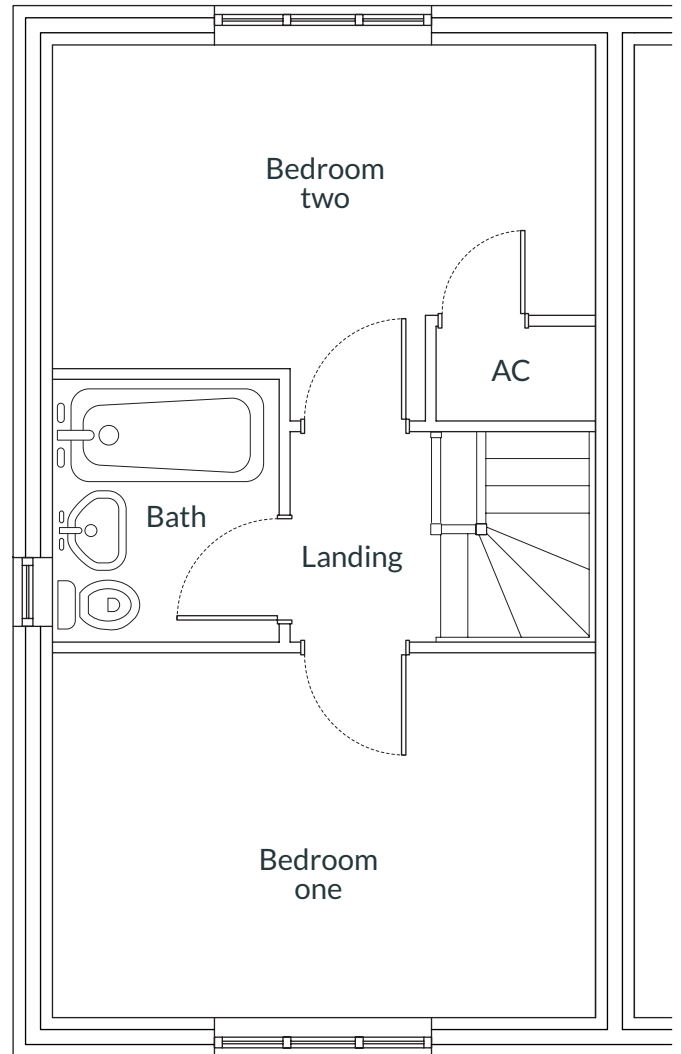
- Oven, hob and extractor;
- Dishwasher;
- Washing machine;
- Fridge/freezer;
- Ceramic floor tiles to kitchen, WC and bathroom;
- Carpet to all non-wet rooms;
- UPVC double glazed windows;
- Neutral décor;
- 2 allocated parking spaces;
- Turf to rear garden.

PROPERTY LOCATION: CO6 2RY





Ground Floor



First Floor

TWO-BEDROOM HOUSE

Plots 6, 7, 27, 28 and 31 -72.12m²

- Living / dining room 5.0m x 5.0m
- Kitchen 3.0m x 2.4m
- Bedroom one 5.0m x 3.0m
- Bedroom two 5.0m x 2.2m
- Bathroom 2.0m x 2.0m

We wish to inform prospective purchasers that we have prepared these particulars as a general guide. We have not carried out a detailed survey nor tested the services, appliances and fittings. Room sizes should not be relied upon for carpets and furnishings.