

HEYBRIDGE WOODS VIEW

Two bedroom end of terrace houses



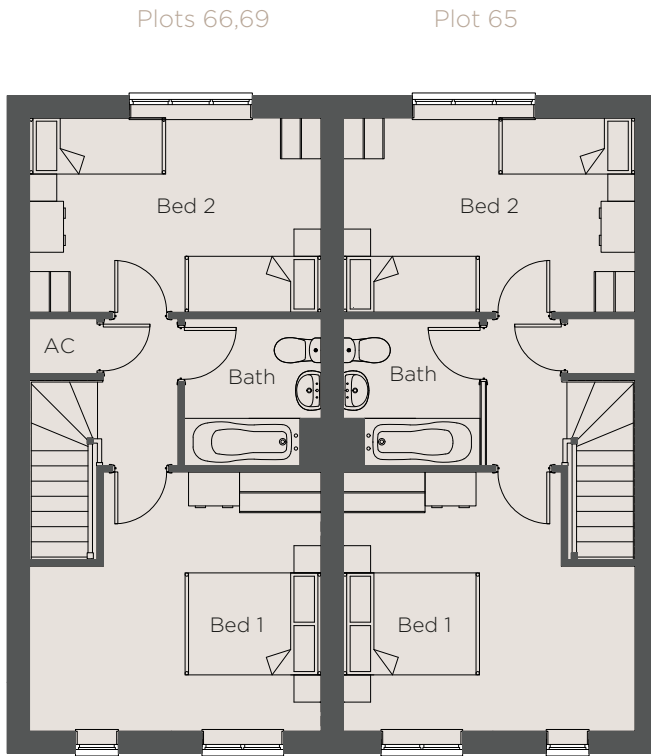
SHARPES MEADOW



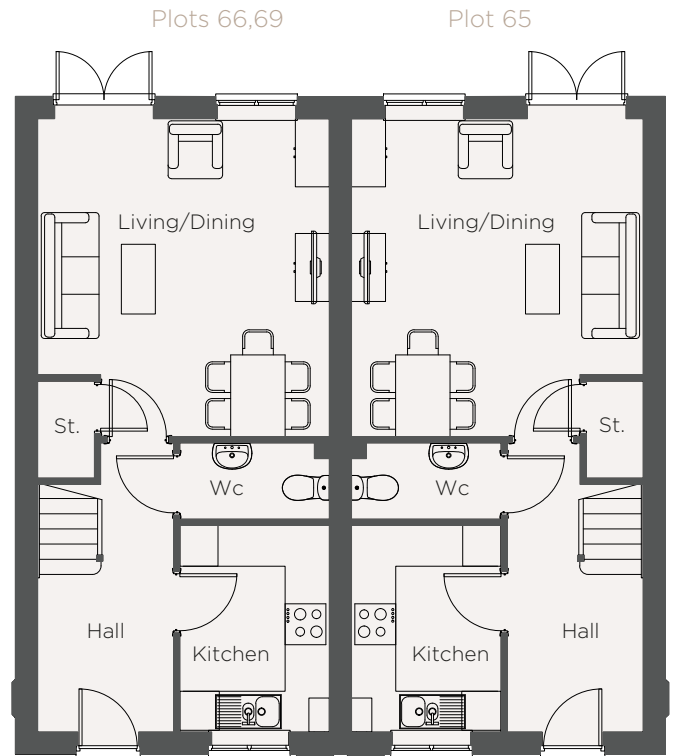
Maldon, Essex

HEYBRIDGE WOODS VIEW

Two Bedroom - Plots 65, 66 & 69



FIRST FLOOR



GROUND FLOOR

Two Bedroom - Plots 65,66 & 69

Lounge/Dining	4.71m x 4.33m	15' 5" x 14' 2'
Kitchen	2.23m x 3.07m	7' 8" x 10' 1'
Bedroom 1	4.33m x 3.84m	14' 3" x 12' 7"
Bedroom 2	2.89m x 4.33m	9' 6" x 14' 3"
Bathroom	2.05m x 2.18m	6' 7" x 7' 2"
Wc	1.5m x 2.23m	5' 1" x 7' 4"

Kitchen

Moore's modern fitted kitchen
Stainless steel built-in oven
Stainless steel gas hob with built-in re-circulating cooker hood
Fridge freezer
Washing machine

Bathroom

White sanitaryware
Shower over bath
Shower screen
Half height tiling to bath wall
Headed towel rail

General

Gas central heating with combi boiler
White UPVC windows with double glazed sealed units
Internal doors - 4-panel grained, white gloss finish with chrome door furniture
GRP front door with multi-point locking system and white internal face
White paint finish to all walls and ceilings
Telephone point to hall (broadband standard cable)
TV point to living room
Mains operated smoke alarm
10-year new homes warranty

Flooring

Karndean flooring to ground floor
Carpet to bedrooms, landing and stairs

Plans are for indicative purposes and not to scale. Measurements have been taken from architect's plans and represent maximum dimensions, these may vary during construction.