

SPICKETS HOUSE

One bedroom mid-terrace houses | Two bedroom end of terrace houses



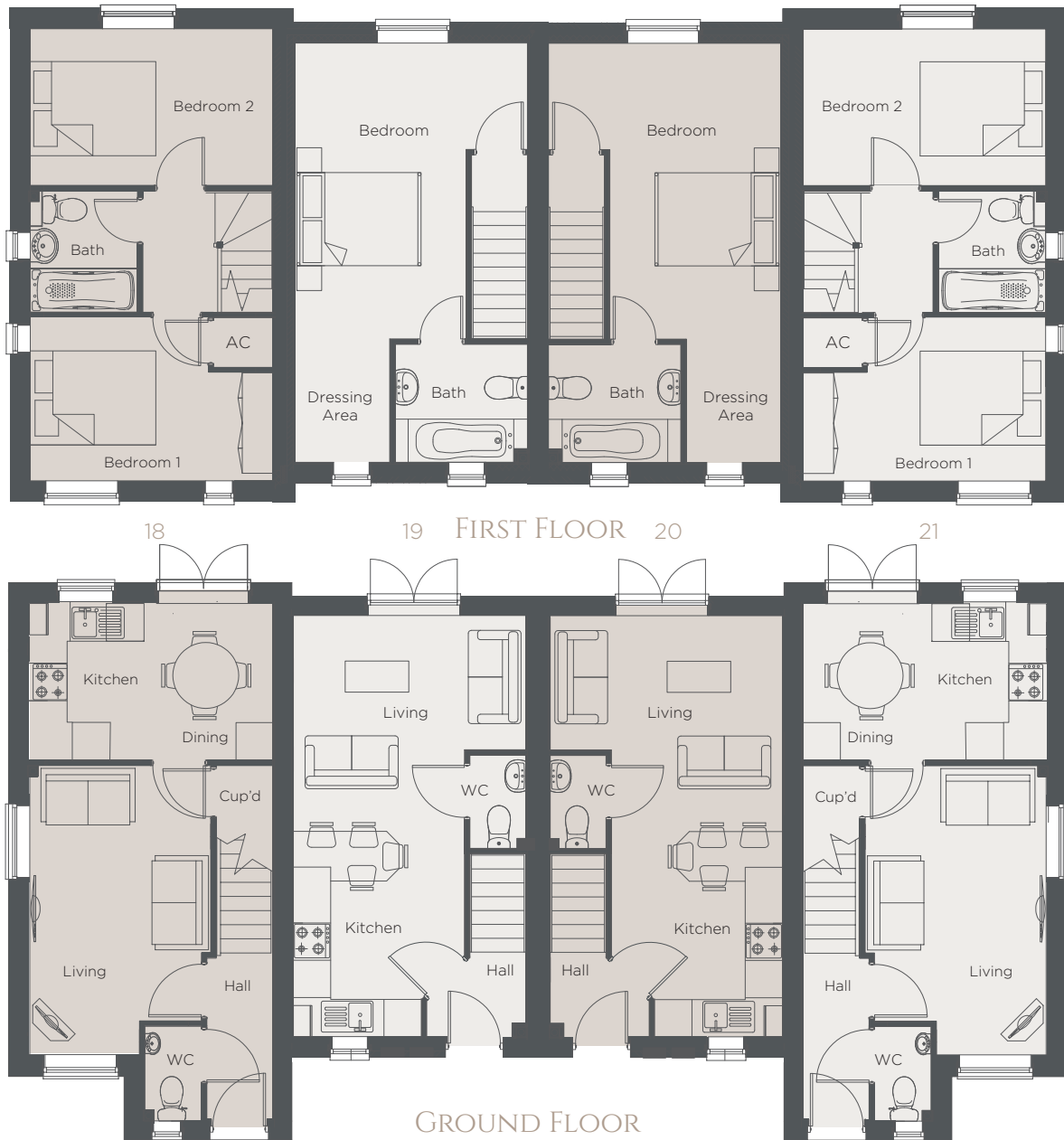
SHARPES MEADOW



Maldon, Essex

SPICKETS HOUSE

One Bedroom - Plots 19, 20 | Two Bedroom - Plots 18, 21



One Bedroom - Plots 19 and 20

Living	3.74 x 2.17m	12'3" x 7'1"
Kitchen/Dining	4.52 x 2.10m	14'10" x 6'11"
Bedroom	4.76 x 3.74m	15'7" x 12'3"
Bathroom	2.17 x 1.94m	7'2" x 6'4"

Two Bedroom - Plots 18 and 21

Living	4.55 x 2.93m	14'11" x 9'7"
Kitchen/Dining	3.94 x 2.54m	12'11" x 8'4"
Bedroom 1	3.94 x 2.64m	12'11" x 8'8"
Bedroom 2	3.94 x 2.54m	12'11" x 8'4"
Bathroom	1.96 x 1.75m	6'5" x 5'9"

Kitchen

Moore's modern fitted kitchen
Stainless steel built-in oven
Stainless steel gas hob with built-in re-circulating cooker hood
Fridge freezer
Washing machine

Bathroom

White sanitaryware
Shower over bath
Shower screen
Half height tiling to bath wall
Headed towel rail

General

Gas central heating with combi boiler
White UPVC windows with double glazed sealed units
Internal doors - 4-panel grained, white gloss finish with chrome door furniture
GRP front door with multi-point locking system and white internal face
White paint finish to all walls and ceilings
Telephone point to hall (broadband standard cable)
TV point to living room
Mains operated smoke alarm
10-year new homes warranty

Flooring

Karndean flooring to ground floor
Carpet to bedrooms, landing and stairs

Plans are for indicative purposes and not to scale. Measurements have been taken from architect's plans and represent maximum dimensions, these may vary during construction.

WWW.ESTUARY.CO.UK